

# Clarke® **METALWORKER**



MINI GRINDER-POLISHER WITH FLEX EXTENSION  
MODEL NO: CGP75F

PART NO: 6500072

## OPERATION & MAINTENANCE INSTRUCTIONS



ORIGINAL INSTRUCTIONS

LS0620 - ISS 3

---

## INTRODUCTION

---

Thank you for purchasing this CLARKE mini grinder-polisher with flex extension. Before attempting to use this product, please read this manual thoroughly and follow the instructions carefully. In doing so you will ensure the safety of yourself and that of others around you, and you can look forward to your purchase giving you long and satisfactory service.

---

## GUARANTEE

---

This product is guaranteed against faulty manufacture for a period of 12 months from the date of purchase. Please keep your receipt which will be required as proof of purchase.

This guarantee is invalid if the product is found to have been abused or tampered with in any way, or not used for the purpose for which it was intended.

Faulty goods should be returned to their place of purchase, no product can be returned to us without prior permission.

This guarantee does not effect your statutory rights.

---

## ENVIRONMENTAL RECYCLING POLICY

---



Through purchase of this product, the customer is taking on the obligation to deal with the WEEE in accordance with the WEEE regulations in relation to the treatment, recycling & recovery and environmentally sound disposal of the WEEE.

In effect, this means that this product must not be disposed of with general household waste. It must be disposed of according to the laws governing Waste Electrical and Electronic Equipment (WEEE) at a recognised disposal facility.

If disposing of this product or any damaged components, do not dispose of with general waste. This product contains valuable raw materials. Metal products should be taken to your local civic amenity site for recycling of metal products.

---

## SPECIFICATIONS

---

Model Number	CGP75F
Part Number	6500072
Dimensions (D x W x H)	127 x 243 x 180 mm
Weight	2.71 kg
Rated Voltage	230 V~ 50 Hz
Rated Input Wattage	120 W
Variable Speed	0 - 9900 rpm
Wheel dimensions	Diameter (75 mm) Thickness (20 mm) Bore (10 mm)
Duty Cycle	S1 (continuous)
Sound pressure	75.8 dB(A)
Sound power	88.8 dB LpA (measured)
Uncertainty factor K	3.0 dB

---

## SAFETY SYMBOLS

---



Read instruction manual before use



Wear eye protection



Wear ear defenders



Wear a dust mask

---

# POWER TOOL SAFETY WARNINGS

---

## 1) WORK AREA

1. **Keep the work area clean and well lit.** Cluttered and dark areas invite accidents.
2. **Do not operate power tools in explosive atmospheres, such as in the presence of flammable liquids, gases or dust.** Power tools create sparks which may ignite the dust or fumes.
3. **Keep children and bystanders away while operating a power tool.** Distractions can cause you to lose control.

## 2) ELECTRICAL SAFETY

1. **Power tool plugs must match the outlet. Never modify the plug in any way. Do not use adapter plugs with earthed (grounded) power tools.** Unmodified plugs and matching outlets will reduce the risk of electric shock.
2. **Do not expose power tools to rain or wet conditions.** Water entering a power tool will increase the risk of electric shock.
3. **Do not abuse the power cable. Never use it for carrying, pulling or unplugging the power tool. Keep the power cable away from heat, oil, sharp edges or moving parts.** Damaged or entangled cables increase the risk of electric shock.
4. **When operating a power tool outdoors, use an extension cable suitable for outdoor use.** Use of a cable suitable for outdoor use reduces the risk of electric shock.
5. **If operating the power tool in a damp location is unavoidable, use a residual current device (RCD) protected supply.**

## 3) PERSONAL SAFETY

1. **Stay alert, watch what you are doing and use common sense when operating a power tool.** Do not use a power tool while you are tired or under the influence of drugs, alcohol or medication. A moment of inattention while operating power tools may result in personal injury.
2. **Use safety equipment. Always wear eye protection.** Safety equipment such as dust mask, non-skid safety shoes, hard hat, or hearing protection used for appropriate conditions will reduce personal injuries.
3. **Avoid accidental starting.** Ensure the switch is in the off position before plugging in. Carrying power tools with your finger on the switch or plugging in power tools that have the switch on invites accidents.
4. **Remove any wrench before turning the power tool on.** A wrench left attached to a rotating part may result in personal injury.
5. **Do not overreach.** Keep proper footing and balance at all times. This enables better control of the power tool in unexpected situations.
6. **Dress properly.** Do not wear loose clothing or jewellery. Keep your hair, clothing and gloves away from moving parts. Loose clothes, jewellery or long hair can be caught in moving parts.

## 4) POWER TOOL USE AND CARE

1. **Do not force the power tool.** Use the correct accessories for your application. The correct power tool will do the job better and safer at the rate which it was designed.
2. **Do not use the power tool if the switch does not turn it on and off.** Any power tool that cannot be controlled with the switch is dangerous and must be repaired.
3. **Disconnect the plug from the power source before changing accessories or storing power tools.** Such preventive safety measures reduce the risk of starting the power tool accidentally.
4. **Store idle tools out of the reach of children and do not allow persons unfamiliar with the power tool or these instructions to operate it.** Power tools are dangerous in the hands of untrained users.
5. **Maintain power tools.** Check for misalignment or binding of moving parts, breakage of parts and any other condition that may affect the power tool's operation. If damaged, have the power tool repaired before use. Many accidents are caused by poorly maintained power tools.
6. **Use the power tool and accessories in accordance with these instructions and in the manner intended, taking into account the working conditions and the work to be performed.** Use of the power tool for operations different from intended could result in a hazardous situation.
7. The performance of this tool may vary, depending upon variations in line voltage. Extension cable usage may also affect performance.

## 5) SERVICE

1. **Have your power tool serviced by qualified service personnel using only identical replacement parts.** This will ensure that the safety of the power tool is maintained.

---

## BENCH GRINDER SAFETY WARNINGS

---

1. Hold the tool or blade being sharpened firmly to prevent loss of control.
2. NEVER install an abrasive flap wheel or sanding disc on this grinder.
3. ALWAYS replace a cracked grinding wheel immediately.
4. NEVER use damaged or incorrect grindstones. The stone and retaining bolt were specially designed for your grinder, for optimum performance and safety of operation. Inspect the condition of the grinding stone before use and do not use if any damage is noticed.
5. Do not use aluminium oxide wheels when grinding non-ferrous metals such as aluminium or brass. Use silicon carbide wheels (not included) for grinding non-ferrous metals.
6. ALWAYS use the rests to steady the workpiece. If the rests are not used, the torque of the spinning grinding/polishing wheel may pull the workpiece from your hands.
7. NEVER leave the grinder unattended when it is connected to an electrical power supply. Switch off the grinder and unplug it before leaving.
8. ALWAYS check for damaged parts. Before further use of the grinder, a guard or other part that is damaged should be carefully checked to determine if it would operate properly and perform its intended function. Check for misalignment or binding of moving parts, breakage of parts and any other condition that may affect the tool's operation. A part that is damaged should be properly repaired or replaced at you local CLARKE service department. Following this rule will reduce the risk of electric shock, fire or serious injury.
9. Eye protection manufactured to the current European safety standards should be worn when operating grinding equipment.

**NOTE:** *Bench grinders used in industrial environments may be subject to the requirements of The Provision and Use of Work Equipment regulations 1992 (particularly regarding the training requirement of The Abrasive Wheels Regulations 1970) or other legislation. If in doubt seek advice.*

**Please keep these instructions in a safe place for future reference.**

# ELECTRICAL CONNECTIONS



**WARNING: READ THESE ELECTRICAL SAFETY INSTRUCTIONS THOROUGHLY BEFORE CONNECTING THE PRODUCT TO THE MAINS SUPPLY.**

Connect the mains lead to a standard, 230 Volt (50Hz) electrical supply through an approved BS 1363 plug or a suitably fused isolator switch.

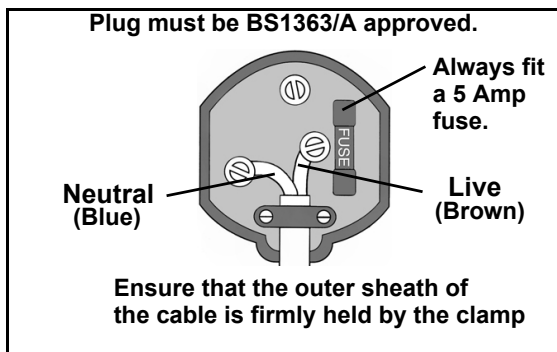
If the plug has to be changed because it is not suitable for your socket, or because of damage, it must be removed and a replacement fitted, following the wiring instructions shown below. The old plug must be discarded safely, as insertion into a power socket could cause an electrical hazard.



**WARNING: THE WIRES IN THE POWER CABLE OF THIS PRODUCT ARE COLOURED IN ACCORDANCE WITH THE FOLLOWING CODE:  
BLUE = NEUTRAL    BROWN = LIVE**

If the colours of the wires in the power cable do not agree with the markings on the plug.

- Connect the BLUE wire to the terminal marked N.
- Connect the BROWN wire to the terminal marked L.



**AN APPROVED RESIDUAL CURRENT DEVICE (RCD) WHICH HAS A TRIPPING CURRENT OF LESS THAN 30 mA MUST BE USED.**

If you are not sure, consult a qualified electrician. DO NOT try to do any repairs.



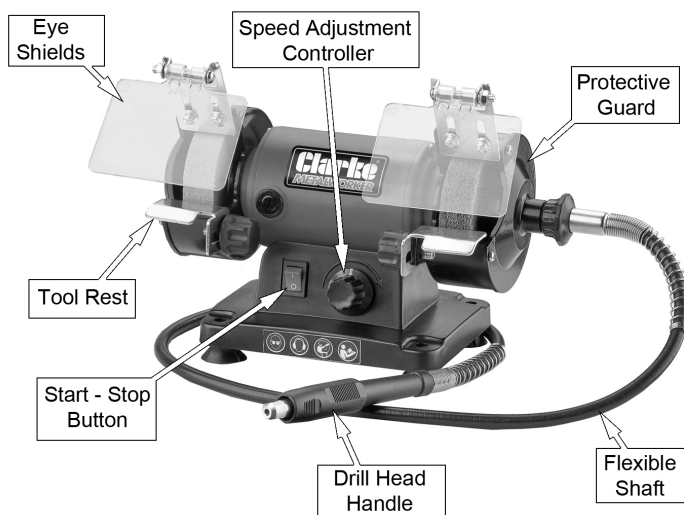
**This symbol indicates that this is a Class II product, and does not require an earth connection.**

## CARTON CONTENTS

The following items should be supplied in the carton. If any parts are missing or damaged, please contact the CLARKE dealer where you purchased the Grinder/Polisher.

1 x Grinder/Polisher	2 x Spark Deflector / Eye Shield
1 x Flexible Shaft Attachment	2 x Tool Rests
100-piece Tool Kit (Including)	
<ul style="list-style-type: none"><li>• 10 x Cutting Discs</li><li>• 20 x Sanding Sleeves</li><li>• 25 x Grinding Discs</li><li>• 3 x Moulding Cutters</li><li>• 3 x Metal Grinding Pins</li><li>• 11 x Stone Grinding Pins</li><li>• 3 x Brass Wire Brushes</li><li>• 3 x Wire Brushes</li></ul>	<ul style="list-style-type: none"><li>• 2 x Inserts</li><li>• 2 x Sleeve Holders</li><li>• 5 x Felt Polishing Cones</li><li>• 10 x Felt Polishing Pads</li><li>• 1 x Grinding Stone</li><li>• 1 x Polishing Paste</li><li>• 1 x Clamping Collet</li></ul>

## PART IDENTIFICATION





---

## BEFORE USE

---

### INSTALLING THE TOOL RESTS

1. Fix the tool rests in place with the thumb screw as shown.
  - The tool rests are adjustable and should be positioned less than 2 mm from the grinding wheels.
  - Ensure that the tool rest is firmly fixed and horizontal.

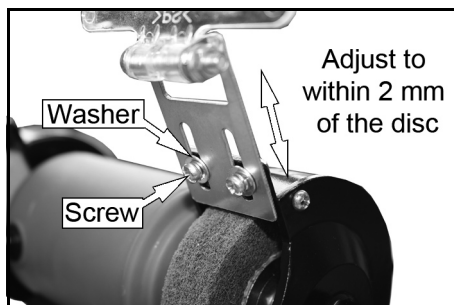


### INSTALLING THE SPARK DEFLECTORS / EYE SHIELDS

Fit the spark deflector / eye shields to the wheel guards using the screws provided.

- Adjust the spark deflector to compensate for wear of the wheel. Keep the distance between the spark deflector and wheel as small as possible and never more than 2 mm.

**NOTE:** Adjust the eye shields to an appropriate distance from the tool rests avoiding interference during operation.



---

## BLADE SHARPENING TIPS

---

### SCISSORS

If possible, take scissors apart to make the sharpening operation easier and safer. Remove material only from the outside surface and work from the heavy end of the blade toward the tip.

### KNIVES

Remove metal from both faces of most knives, working from the large end of the blade toward the tip.

---

## OPERATION

---



CAUTION: KEEP ALL BYSTANDERS AT A SAFE DISTANCE AND NOT IN DIRECT LINE WITH THE, FRONT OR BACK OF THE GRINDER.

CAUTION: ALWAYS WEAR SAFETY GLASSES.

---

**NOTE:** Check that there is approx a 1.5 mm clearance between the tool rest and the surface of the grinding wheel. Adjust as necessary.

**NOTE:** Check the gap between the spark deflectors and the surface of the grinding wheel. These should also be a maximum of 2 mm. Adjust as necessary.

**NOTE:** Check that the eyeshields have been secured in the correct position and that the grinding wheel lock nuts are tight.

1. Stand to the side of the bench grinder and switch it on using the on/off switch.
  - Let the wheels reach full speed before use.
  - The wheel rotates in the same direction as the arrow stamped in the side of the wheel guard.
2. Hold the work piece firmly against the tool rest. Hold very small pieces with pliers or other suitable clamps.
3. Press the workpiece smoothly and evenly against the grinding wheel.
4. Always keep the workpiece moving across the face of the wheel. Grinding against the same part of the wheel will cause uneven wear of the wheel face.
  - Grind only on the face of the grinding wheel and never the side of it.

**NOTE:** Prolonged grinding will cause tools/workpieces to become hot. Take care when handling hot items.

5. Switch the bench grinder off using the on/off switch when you have finished.

### DRESSING THE GRINDING WHEEL

The grinding wheel may need dressing occasionally. Only dress the wheel with a proper dressing tool whilst wearing safety goggles or glasses. If in doubt seek professional advice. Dressing tools are available from your CLARKE dealer.

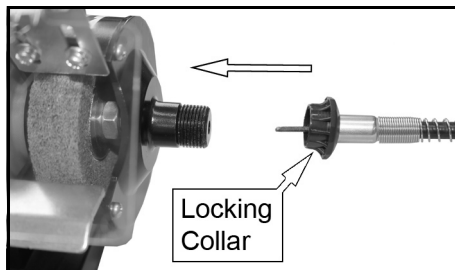
Grinding wheel dresser model no ET125;- part no 1700225

# USING THE FLEXIBLE SHAFT ATTACHMENT

## CONNECT THE FLEXIBLE SHAFT

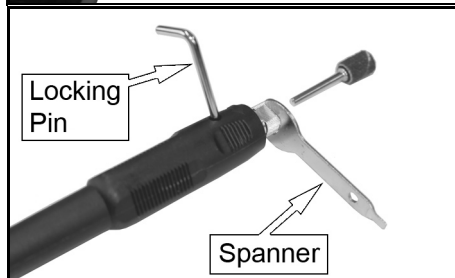
1. Insert the flexible shaft into the right side of the grinder as shown and tighten the locking collar as shown.

**NOTE:** The locking collar has a left hand thread



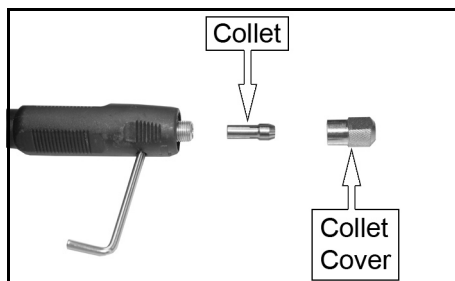
## FITTING THE BITS

1. Insert the locking pin into the drill head handle as shown.
2. Use the spanner supplied to loosen the collet cover.
3. Insert the bit required.
4. Retighten the collet cover.
5. Remove the locking pin.



## CHANGING COLLET

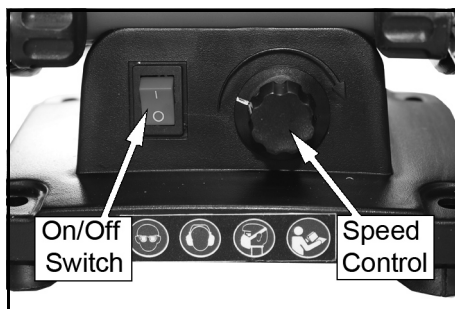
1. insert the locking pin into the drill head handle as shown.
2. Use the spanner supplied to remove the collet cover.
3. Replace the collet
4. Refit the collet cover
5. Remove the locking pin



## ON / OFF - SPEED CONTROL

- Press (I) to turn the grinder on.
- Press (O) to turn the grinder off.
- Vary the speed using the speed controller.

**NOTE:** When grinding, set the speed control to maximum to prevent stalling.



## REPLACING THE GRINDING WHEELS

**WARNING: DO NOT USE DAMAGED GRINDING WHEELS.**



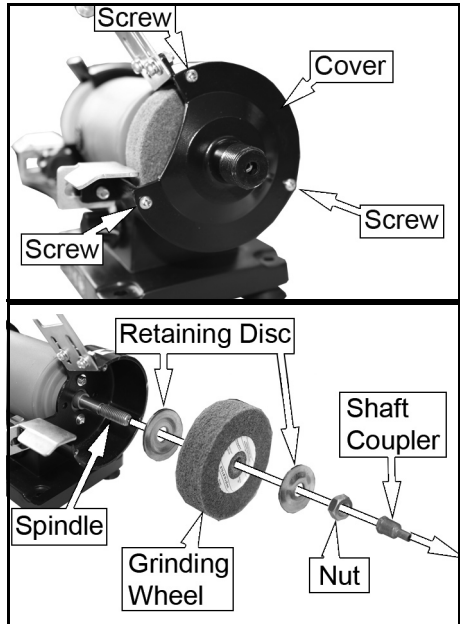
**WARNING: SWITCH THE GRINDER OFF AND DISCONNECT THE POWER SUPPLY BEFORE CHANGING THE GRINDING WHEELS**

The grinding wheel must be replaced whenever the distance between the external diameter of the wheel and the edge of the grinding wheel cover is greater than 6 mm.

1. Remove the screws shown and remove the cover.
2. Hold the wheel by hand and use a suitable spanner to remove the shaft coupler (right wheel only) and nut.

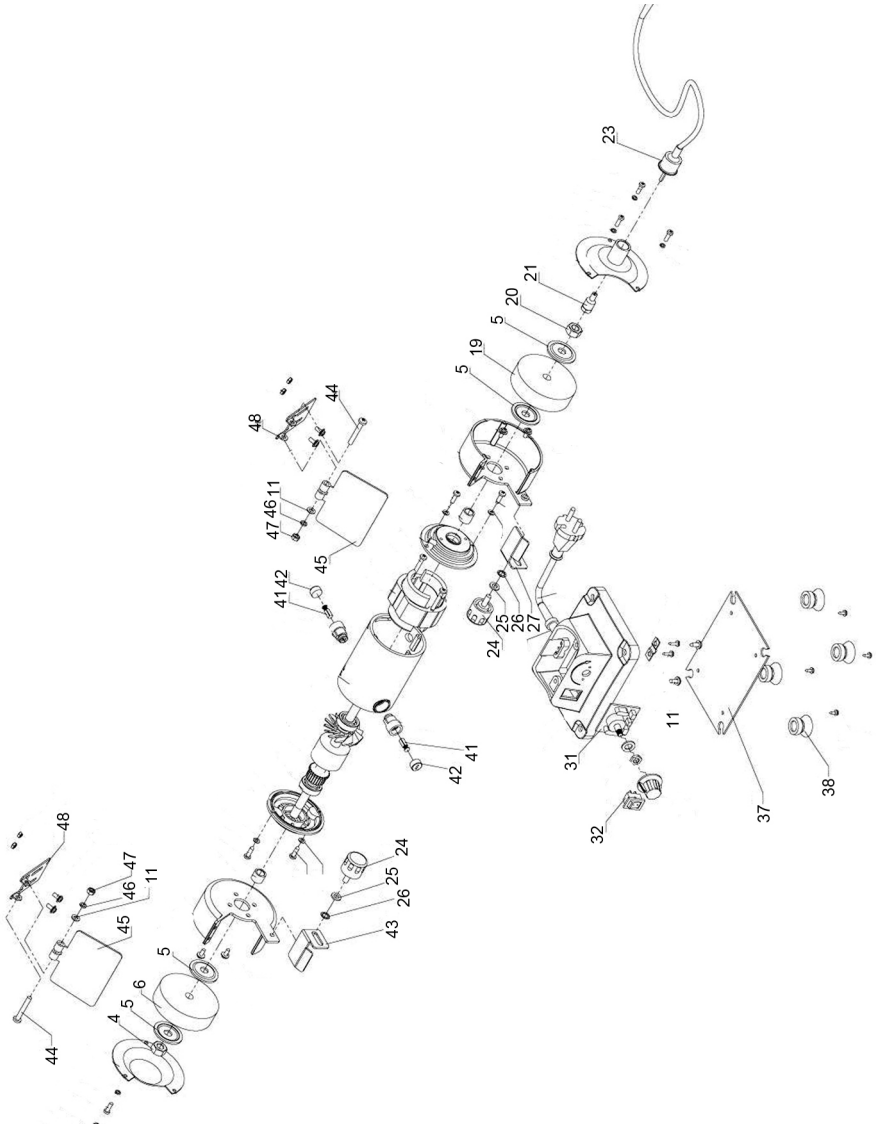
**NOTE:** The left hand grinding wheel locking nut has a left handed thread.

3. Slide off the retaining disc and wheel and replace with a new one.



- Only use grinding wheels recommended by the manufacturer which have a marked speed rating equal to or greater than the speed marked on the rating plate of the bench grinder.
  - The grinding wheel should have maximum dimensions of 75 mm diameter, 20 mm thick with a bore size of 10 mm.
  - Inspect the wheel for cracks, chips or any other visible damage. Damaged grinding wheels must be discarded.
4. Replace the outer retaining disc, nut and shaft coupler.
    - Do not overtighten as this may damage the grinding wheel.
  5. Replace the cover.
    - After mounting, the wheel should be test run for approximately 1 minute without load. If you notice excessive vibration, have your machine checked by the CLARKE service department.

# PARTS DIAGRAM



---

## PART LIST

---

**NOTE:** Not all parts are available as a spare item.

4	M10 Nut (left hand thread)
5	Flange
6	Buffing wheel
19	Grinding wheel
20	M10 Nut (right hand thread)
21	Shaft Coupler
23	Flexible Shaft attachment
24	Thumb Screw
25	Flat Washer
11 + 44 - 48	Spark deflector/eye shield assembly

26	Toothed Washer
27	Right Tool Rest
31	Speed Dial controller
32	On/Off Switch
37	Baseplate
38	Foot
41	Brush
42	Brush cap cover
43	Left Tool Rest

---

## MAINTENANCE

---

### CLEANING



**WARNING: NEVER USE SOLVENTS OR OTHER HARSH CHEMICALS FOR CLEANING THE TOOL. YOU SHOULD USE A CLOTH DAMPENED WITH WATER AND MILD SOAP. NEVER LET ANY LIQUID GET INSIDE THE TOOL; NEVER IMMERSE ANY PART OF THE TOOL INTO A LIQUID.**

---

### CHANGING THE CARBON BRUSHES

1. Remove the brush cover.
2. Remove the worn brush.
3. Replace with the new brush.
4. Repeat on the other side of the body.
  - Both brushes must be replaced at the same time.



# DECLARATION OF CONFORMITY



**Clarke**<sup>®</sup>  
**INTERNATIONAL**

Hemncill Street, Epping, Essex CM16 4LG

## DECLARATION OF CONFORMITY

This is an important document and should be retained.

We hereby declare that this product(s) complies with the following directive(s):

- 2014/30/EU      *Electromagnetic Compatibility Directive.*
- 2006/42/EC    *Machinery Directive.*
- 2011/65/EU    *Restriction of Hazardous substances (amended by (EU) 2015/863).*

The following standards have been applied to the product(s):

- EN 62841-1:2015, EN 62841-3-4:2016/A11:2017, EN 61000-3-2:2014, EN 61000-3-3:2013,
- EN 55014-2:2015, EN 55014-1:2017, EN ISO 12100:2010.

The technical documentation required to demonstrate that the product(s) meet(s) the requirement(s) of the aforementioned directive(s) has been compiled and is available for inspection by the relevant enforcement authorities.

The CE mark was first applied in: 2019

<b>Product Description:</b>	Mini Grinder/Polisher with Flex Extension Kit
<b>Model number(s):</b>	CGP75F
<b>Serial / batch Number:</b>	N/A
<b>Date of Issue:</b>	10/06/2020

Signed:

J.A. Clarke  
Director

# A SELECTION FROM THE VAST RANGE OF

# Clarke®

## QUALITY PRODUCTS

### AIR COMPRESSORS

From DIY to industrial, Plus air tools, spray guns and accessories.

### GENERATORS

Prime duty or emergency standby for business, home and leisure.

### POWER WASHERS

Hot and cold, electric and engine driven - we have what you need

### WELDERS

Mig, Arc, Tig and Spot. From DIY to auto/industrial.

### METALWORKING

Drills, grinders and saws for DIY and professional use.

### WOODWORKING

Saws, sanders, lathes, mortisers and dust extraction.

### HYDRAULICS

Cranes, body repair kits, transmission jacks for all types of workshop use.

### WATER PUMPS

Submersible, electric and engine driven for DIY, agriculture and industry.

### POWERTOOLS

Angle grinders, cordless drill sets, saws and sanders.

### STARTERS/CHARGERS

All sizes for car and commercial use.



**PARTS & SERVICE: 0208 988 7400**

**E-mail: [Parts@clarkeinternational.com](mailto:Parts@clarkeinternational.com) or [Service@clarkeinternational.com](mailto:Service@clarkeinternational.com)**

**SALES: UK 01992 565333 or Export 00 44 (0)1992 565335**

**Clarke® INTERNATIONAL** Hemnall Street, Epping, Essex CM16 4LG  
[www.clarkeinternational.com](http://www.clarkeinternational.com)